

# ALUMINATOR PRO

## ALL ALUMINUM RETROFIT ROOF DRAIN

### FEATURES:

- All Aluminum Retrofit Drain with **NEW PRO Dome & Coated Clamping Ring**
- Constructed of Heavy Duty Spun Aluminum for Quick & Easy Installation
- Heavy Duty **Coated** Aluminum Ring that is 1-1/4" Tall
  - 12 Scallops to Maximize Drainage
  - Seep Holes on Bottom of Ring and Bolt in Place
  - 3 Bolt **Pro Dome** Aluminum Security Strainer w/ **Removal Lid** for Easy Cleaning
- Standard with ProSeal Rubber Seal
- Larger Stud Diameter for Increased Strength of Hardware
- Available in Sizes of 3", 4", 5" & 6"
- 2" & 8" (Intimidator) w/ Expanding Tape
- Includes Strong Mechanical Seal that Prevents Water Back-up Issues
- Flange Diameter 16"
- Drain Outlet Length 12"

### OPTIONS/ACCESSORIES

- **OVERFLOW RING**  
Marathon Roofing Product's Overflow option is a spun aluminum attachment that is designed to use with all of our aluminum drains with clamping ring. It provides additional drainage when water levels exceeds 2 inches. 2" & 4" aluminum overflow insert available (call for details)
- **PVC/TPO COATINGS**  
Our Aluminator Flange has the option to be PVC or TPO Coated for direct hot air welding of PVC and TPO type roofing membranes.

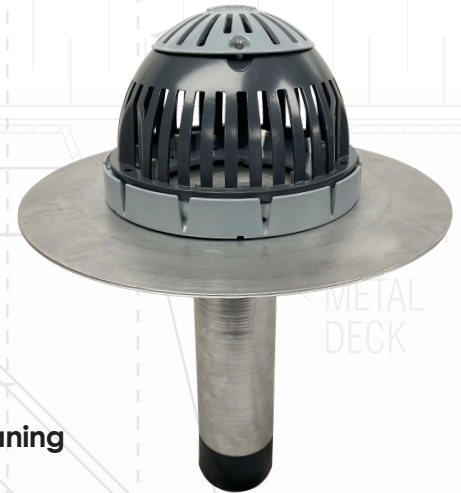
### THE CHART BELOW SHOWS OUR SEAL EXPANSION CAPACITIES FOR OUR ALUMINATOR & PROSEAL DRAINS

Drain Size	Starting OD of Seal/Outlet	Fits into Pipe ID	Maximum Expansion Diameter of Seal	ID of Seal
3"	2.85"	2-7/8" – 3-1/4"	3.40"	2.19"
4"	3.80"	3-7/8" – 4-1/4"	4.40"	3.12"
5"	4.80"	4-7/8" – 5-1/4"	5.40"	4.15"
6"	5.70"	5-7/8" – 6-1/4"	6.40"	5"

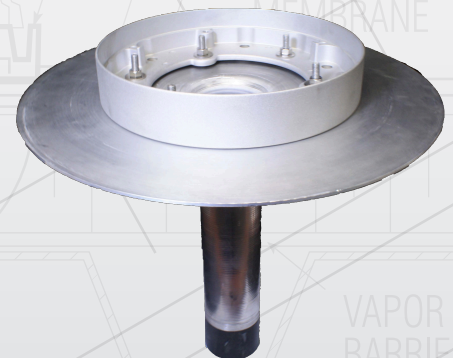
### FLOW CAPACITY

Size "	GPM
3"	45
4"	85
5"	180
6"	210

Above drains were able to perform at the peak rates with a head of water of 3-1/4" or less.



ProSeal Seal



Aluminator with overflow ring

Due to variations in manufacturing and job site inconsistencies the above data are guidelines only and are not guaranteed for any specific situations.



PVC coating only