

PROSEAL

FEATURES:

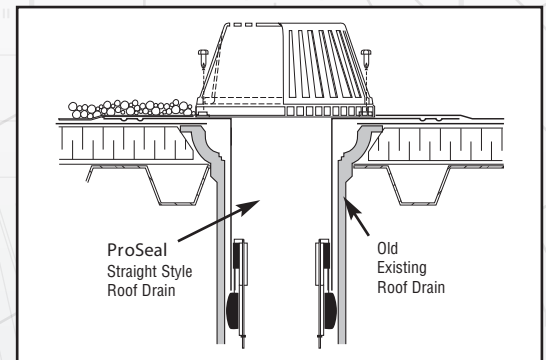
- Heavy Duty, Durable, Long Lasting Copper
- Also available in Spun Aluminum
- Strong Mechanical Seal Prevents Water Backups
- Large 3 Bolt Strainer Dome
- All Common Sizes Available
- Bolt Down Clamping Ring for Single-Ply Systems
- Variable Length Copper Outlets, Up to 15"

ADVANTAGES:

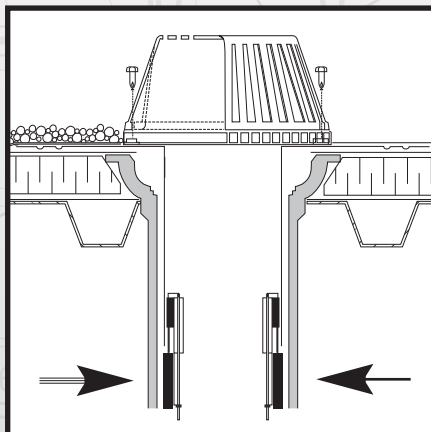
- A Copper Drain with mechanical seal
- Also available in spun aluminum
- Compression of mechanical seal eliminates water backing up into roof system
- Fits all standard sizes of existing roof drains
- Installs from the rooftop using simple hand or power screwdriver with square head adapter
- Offered in variable length outlets, up to 15"
- Proven performance of both copper, aluminum drain and mechanical seal
- Economical to purchase and simple to install



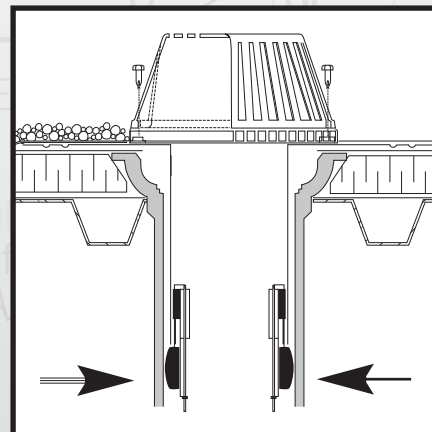
ProSealTM



BEFORE COMPRESSION



AFTER COMPRESSION



PROSEAL

INSTRUCTIONS:

Quick and Easy to Install

- 1) Make certain the inside of the roof drain outlet is as clean and smooth as possible.
- 2) Apply liberal amounts of roof mastic to the underside of the drain flange.
- 3) Insert the **ProSeal** drain into the existing drain opening.
- 4) Using the long **ProSeal** hand screwdriver or power driven attachment in a power drill, evenly tighten the 3 seal screws from above until they are quite snug.
- 5) If the clamping ring option is to be used next bolt down the clamping ring over the roof membrane.
- 6) Attach the roof drain strainer dome.

ProSeal Installation Drivers:

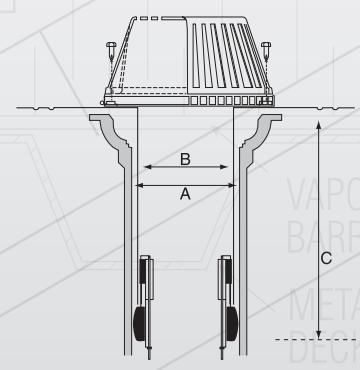
Drivers have special non-slip square heads to adapt to **ProSeal** expansion screws. Power shaft easily installs in any power drill for fast expansion of drain seal.

TYPE	SIZE	LENGTH
	EXISTING DRAIN SIZE (A)	STRAIGHT (C)
	inches/mm	inches/mm
ProSeal (STR) 3	3" 76 mm	11" 279 mm
ProSeal (STR) 4	4" 102 mm	11" 279 mm
ProSeal (STR) 5	5" 127 mm	11" 279 mm
ProSeal (STR) 6	6" 152 mm	11" 279 mm

Standard: ProSeal drains include 10" (203mm) high density polyethylene (Black Plastic) strainer dome.

Options for ProSeal Drains:

- CR clamping ring for straight styles only
- Drain outlets may be ordered extended by 6" (152 mm)
- Cast iron stainer dome
- Flange coatings: Asphalt, PVC or Plain (standard)



WARNING
 Cancer and Reproductive Harm
www.P65Warnings.ca.gov
PVC Coating Only