

RD-100-CP

CAST IRON ROOF DRAIN WITH PROMENADE TOP

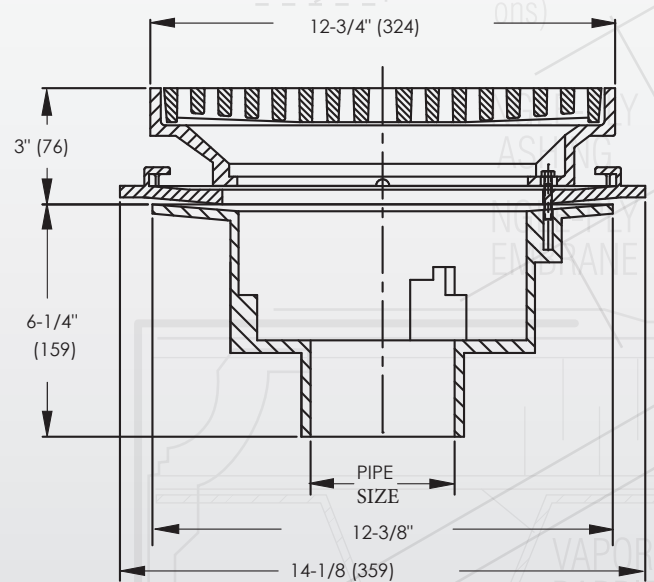
Large body epoxy coated cast iron roof drain with flashing clamp with integral gravel stop, 12-3/4" x 12-3/4" square epoxy coated ductile iron heel proof promenade top and no hub (standard) outlet. Constructed to withstand climate and the rigors of long-term use.

FEATURES

- Heel proof promenade top for reliable performance
- No hub (standard) outlet for easy installation
- Epoxy coated cast iron drain and cast ductile iron for smooth finish and long life
- Available in 2" - 6"

OPTIONS

- Push-on or threaded outlets
- Sump receiver
- Underdeck clamp
- Side outlet
- Adjustable extension flange
- PVC body



Load Rating

Load Rating	Free Area Sq. In.
*XHD	41

Deck opening 10" (254)
with sump receiver 13-3/4" (337)