

RD-700

ONE PIECE DUAL OVERFLOW CAST IRON ROOF DRAIN

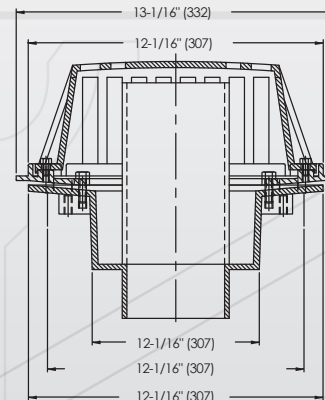
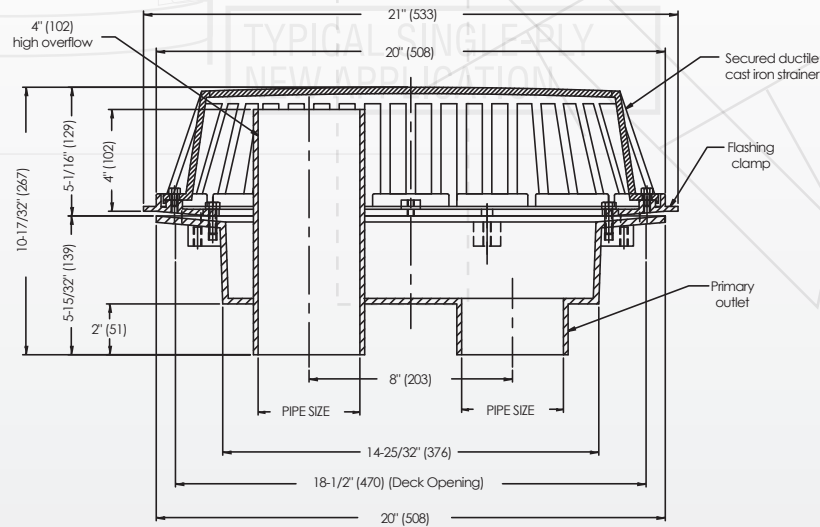
RD-700 epoxy coated cast iron dual outlet roof drain/overflow combination with flashing clamp, integral gravel stop, 4 in. (102mm) high internal overflow standpipe, secured ductile iron dome, and no hub outlets.

FEATURES

- Secured ductile iron dome is engineered to last
- Flashing clamps with integral gravel stop and overflow standpipe for reliable drainage and overflow
- No hub outlets for easy installation
- Engineered with cast iron for long life and durability
- Available in 3", 4", 5" and 6"

OPTIONS

- Underdeck clamp
- Deck flange/Adj. extension
- Aluminum strainer
- Vandal proof strainer
- 2" high overflow



Free Area Sq. In. 157	Deck opening: 18-1/2" (470) x 10-1/2" (267) with sump receiver: 22" (559) x 14" (356)
-----------------------------	--