



ROOF HATCHES

B-RHA: Aluminum Roof Hatch

3310 N. Benzing Road, Orchard Park, NY 14127-1538 • 800-828-8424 • (716) 332-7673 • FAX: (716) 332-7676 • mrp@marathondrains.com • www.marathondrains.com

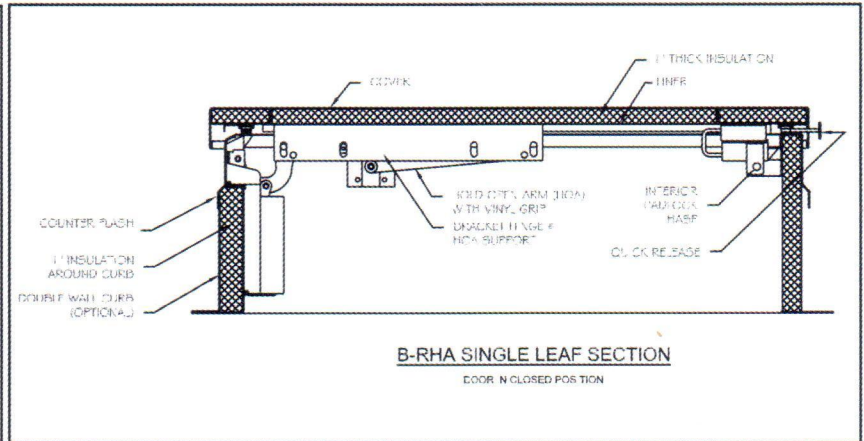
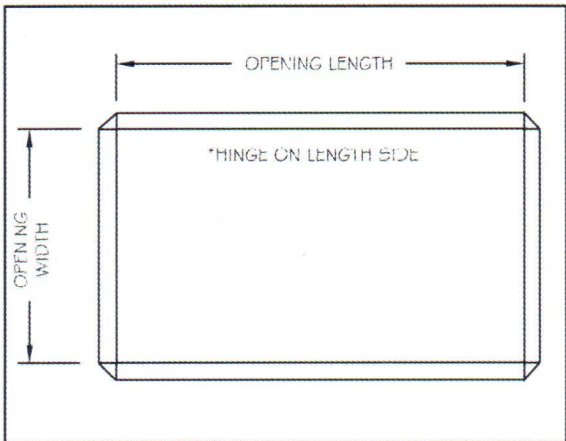
SERIES B-RHA - Single Door Roof Hatch

DESCRIPTION

The Marathon B-RHA roof hatch is manufactured from aluminum to ensure years of dependable use, even in the most extreme weather conditions. The lids are mounted on a 12" curb with cap flashing to ensure against leakage. B-D roof hatches come standard with compression springs, zinc plated steel hardware, and insulation in the cover and at the curb perimeter.

SPECIFICATIONS

- Cover & Liner:** 11-gauge (0.090") aluminum cover with an 18-gauge aluminum liner. Cover is stiffened with stand a live load of 40 psf with maximum deflection of $\frac{1}{500}$ of the span. Cover also with stands a maximum wind uplift of 20 psf
- Curb:** 11-gauge (0.090") aluminum
Optional: 11-gauge aluminum double wall curb available (curb liner at exterior)
- Hinge:** Tamperproof hinge contained within hatch as part of a spring assembly
- Latch:** Zinc coated steel slam latch. Single leaf hatches that exceed 60" hinge dimension are manufactured with a zinc coated steel 2-point latch
- Springs:** Greased compression springs enclosed in telescopic tubes, which counterbalance the door to require no more than 10 lbs. of opening force
- Hold Open Arm:** Locking hold open arm.
- Hardware:** Zinc-coated steel
Optional: Stainless steel
- Insulation:** 1" thick rigid insulation in cover and 1" at curb perimeter
- Mounting Flange:** 3/2"
- Finish:** Mill
- Warranty:** Five years from date of final acceptance



Standard Sizes width x height (inches)	Standard Sizes width x height (mm)
24 x 24	610 x 610
30 x 30	762 x 762
30 x 54	762 x 1350
30 x 96	762 x 2438
36 x 24	914 x 610
36 x 30	914 x 762
36 x 36	914 x 914
36 x 96	914 x 2438
48 x 48	1219 x 1219

All units are hinged on the second dimension (length.) Rough opening required = hatch size.
Marathon Roofing Products reserves the right to change the design or details of its products without notice.



ROOF HATCHES

B-RHG: Galvanized Steel Roof Hatch

3310 N. Benzing Road, Orchard Park, NY 14127-1538 • 800-828-8424 • (716) 332-7673 • FAX: (716) 332-7676 • mrp@marathondrains.com • www.marathondrains.com

SERIES B-RHG - Single Door Roof Hatch

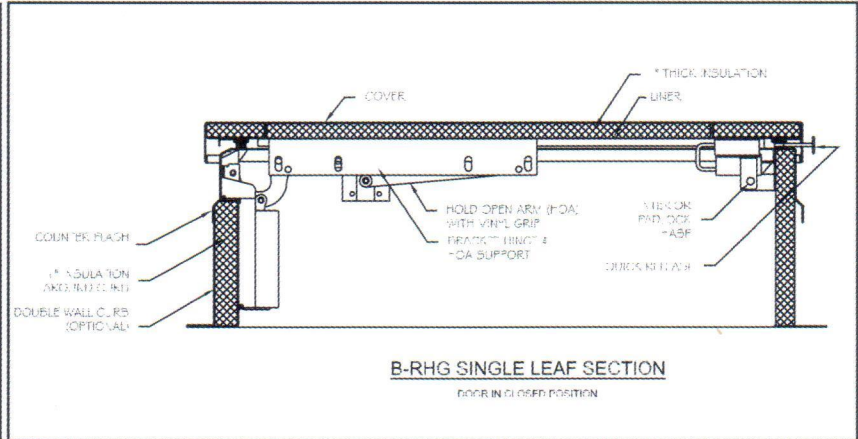
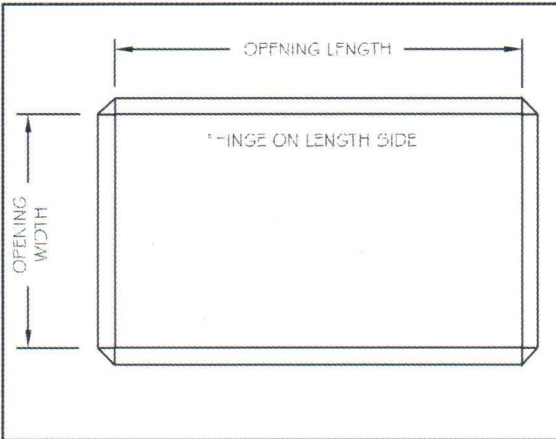
DESCRIPTION

The Marathon B-RHG roof hatch is manufactured from galvanized steel to ensure years of dependable use, even in the most extreme weather conditions. The lids are mounted on a 12" curb with cap flashing to ensure against leakage. B-D roof hatches come standard with compression springs, zinc plated steel hardware, and insulation in the cover and at the curb perimeter.



SPECIFICATIONS

- Cover & Liner:** 14-gauge galvanized steel cover with a 22-gauge galvanized steel liner. Cover is stiffened to withstand a live load of 40 psf with maximum deflection of $\frac{1}{160}$ of the span
Cover also withstands a maximum wind uplift of 20 psf
- Curb:** 14-gauge galvanized steel
Optional: Double wall curb at exterior
- Hinge:** Tamperproof hinge contained within hatch as part of a spring assembly
- Latch:** Zinc coated steel slam latch. All single leaf hatches that exceed 60" hinge dimension are manufactured with a zinc coated steel 2-point latch
- Springs:** Greased compression springs enclosed in telescopic tubes, which counterbalance the door to require no more than 10 lbs. of opening force
- Hold Open Arm:** One locking hold open arm
- Hardware:** Zinc-coated steel
Optional: Stainless steel
- Insulation:** 1" thick rigid insulation in cover and 1" at curb perimeter
- Mounting Flange:** 3/8"
- Finish:** Factory applied powder coat
- Warranty:** Five years from date of final acceptance



Standard Sizes width x height (inches)	Standard Sizes width x height (mm)
24 x 24	610 x 610
30 x 30	762 x 762
30 x 54	762 x 1219
30 x 96	762 x 2438
36 x 24	914 x 610
36 x 30	914 x 762
36 x 36	914 x 914
36 x 96	914 x 2438
48 x 48	1219 x 1219

All units are hinged on the second dimension (length.) Rough opening required = hatch size.
Marathon Roofing Products reserves the right to change the design or details of its products without notice.